



The Rise

THE LIVING FOR THE PASSIONATE

APARTMENT - TYPE FIVE

2 + 1 ROOM - OCEAN VIEW

WELCOME TO *The* **RISE**

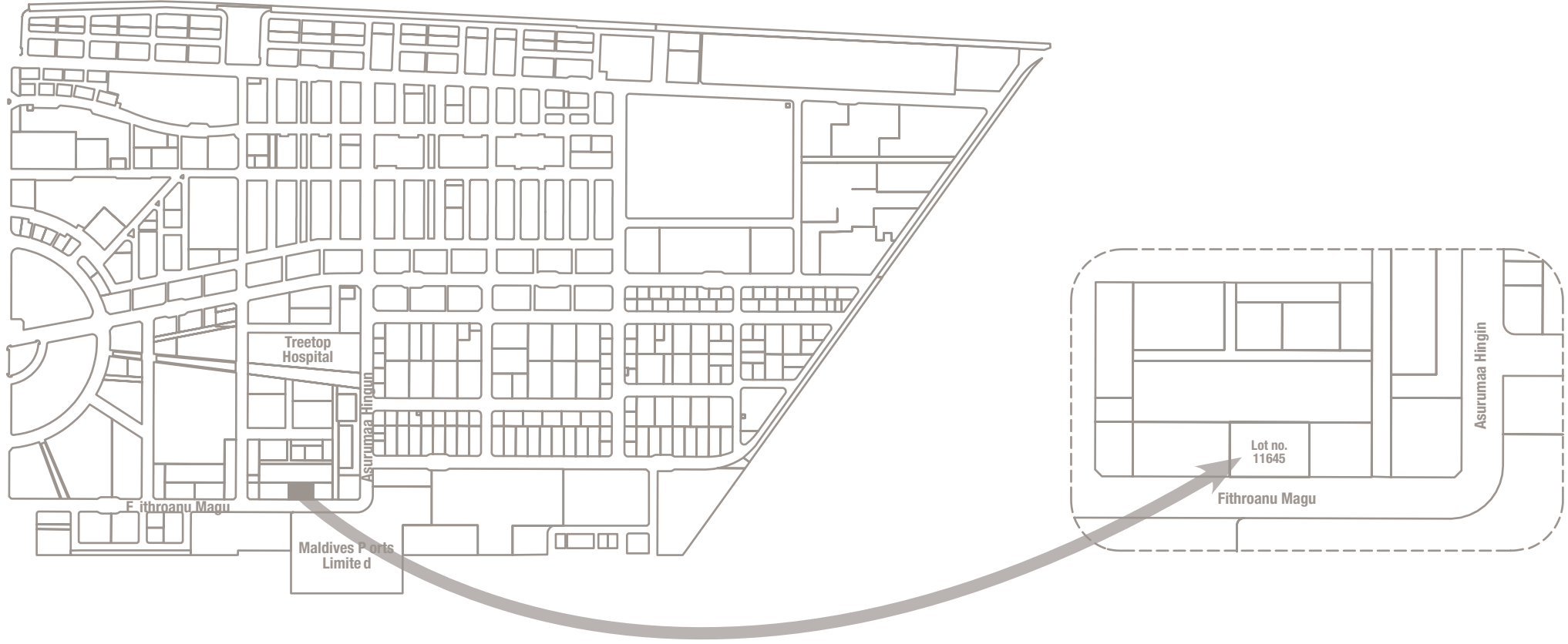
THE LIVING FOR THE PASSIONATE



**INDULGE
THE THRILL
OF LIVING IN
PERFECTION
AND SERENITY.**

THE LIVING FOR THE PASSIONATE

LOCATION



THE DEVELOPER

The Rise is an initiative by Fedo Pvt Ltd, a leading company with over a decade of experience in premium construction. Over the years Fedo Pvt Ltd has delivered high quality real estate projects which has received many positive testimonials from its clients. Fedo aims to offer a unique living experience at “The Rise” by combining innovative design, conveniences and quality services and facilities that delivers passionate living spaces..

THE CONCEPT

The Rise is a contemporary living space introduced by Fedo Private Limited. Designed with ultimate sophistication and elegance in mind, The Rise offers Breathtaking views of the vast turquoise lagoon stretched towards the Velana International Airport and the magnificent take-off and landing view of planes touching down the Maldives along with the glaring sun setting down the water ridge. The Rise has over 53 ultramodern and spacious apartments.



Living Room - Apartment - Type Five

FLOOR PLAN

TYPE FIVE

Residence Description

02 Bedrooms

02 Attached Toilets

01 Maid Room

01 Laundry Room

01 Balcony

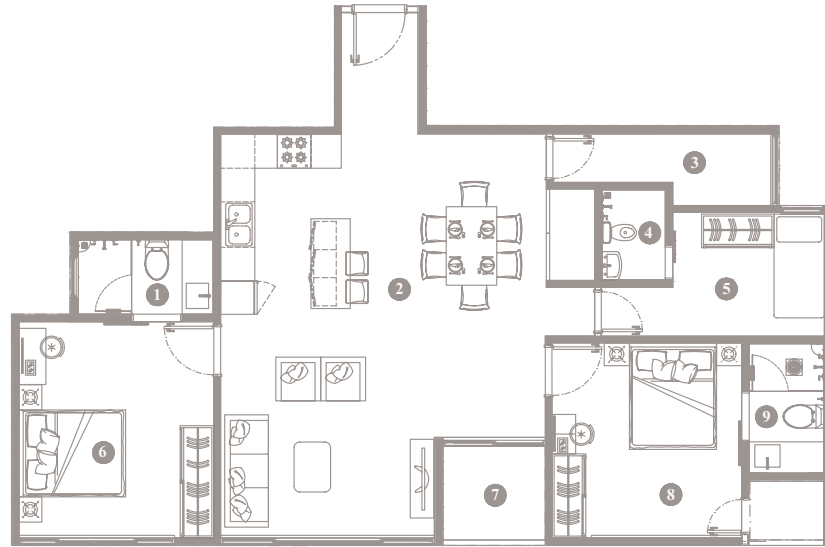
View: Ocean Front

Floor Area: 1110 Square Feet

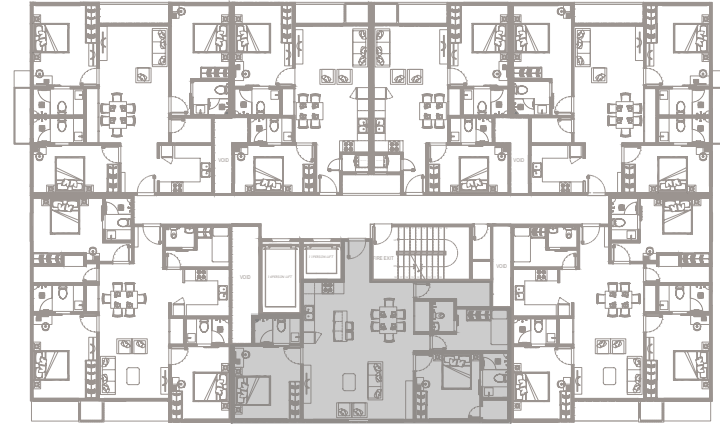


STATED DIMENSIONS ARE BASED ON THE STANDARD ARCHITECTURAL DRAWINGS APPROVED BY HOUSING DEVELOPMENT CORPORATION. A CHANGE TO THE INTERIOR FINISHING CAN BE ACCOMMODATED ON A REQUEST BASIS AND IN COMPLIANCE WITH THE CODES SET BY THE HOUSING DEVELOPMENT CORPORATION.

TYPE FIVE (Measurements)



No	Component	Area (SQFT)
01	Master Toilet	37.89
02	Living/Dining/Kitchen	472.11
03	Laundry	44.02
04	Toilet - Two	21.96
05	Maid Room	91.28



No	Component	Area (SQFT)
06	Master Bedroom	144.24
07	Balcony	31.65
08	Bedroom - Two	110.11
09	Toilet - Three	33.05



Master Bedroom- Apartment - Type Five

**DESIGNED FOR DISCERNING
CLIENTS SEEKING EXCLUSIVE
LIVING.**

THE LIVING FOR THE PASSIONATE



Main Toilet - Apartment - Type Five

**SPACIOUS.
ELEGANT.
BUILT TO
PERFECTION.**

TEKTÓN
DESIGN
ARCHITECTS
& ENGINEERS

FEATURES AND SERVICES

Car parking slot available for purchase for selected apartments

A spacious indoor swimming pool

24 hour security and CCTV surveillance throughout the property's public areas.

Well equipped and managed children playroom in the common area

Maintenance and waster management services

A private lobby area for tenants

Two Spacious Elevators with access control for apartments

An equipped indoor gym facility

Smoke detectors and fire hydrant system throughout the whole building

**A SPACIOUS ABODE FOR A
HAPPIER LIVING.**

THE LIVING FOR THE PASSIONATE

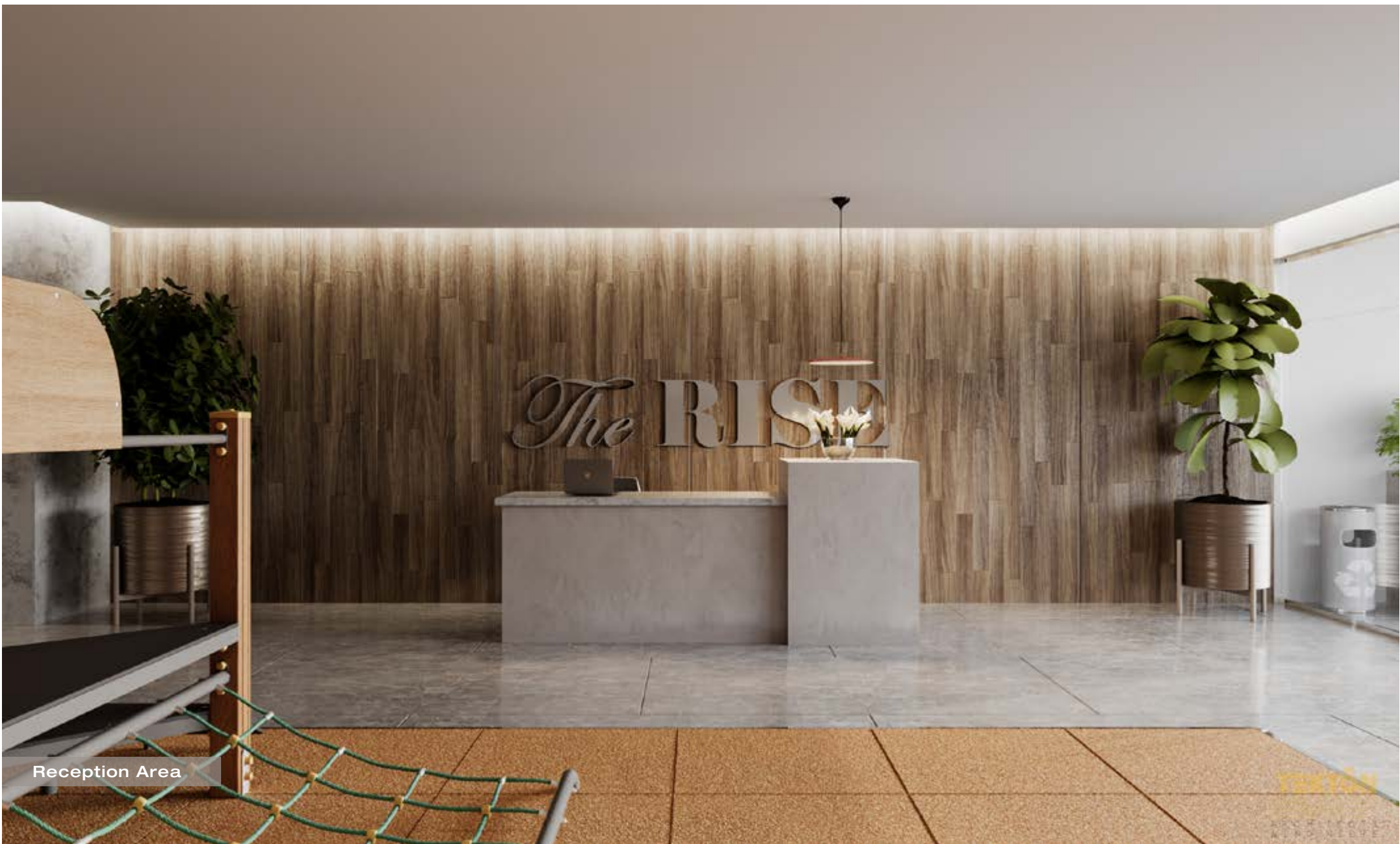


Master Bedroom - Apartment - Type Five



Main Pool Area

STANTON



Reception Area

**AN ADDRESS OF DISTINCTION
AND STYLE.**

THE LIVING FOR THE PASSIONATE




**DESIGN WITH
PRIVACY AND
AESTHETICS
IN MIND.**

Access to Apartments



Gym and Common Area

A row of palm trees against a light sky background. The trees are tall and slender, with their fronds visible at the top. The background is a pale, hazy blue, suggesting a bright, overcast day. The palm trees are arranged in a slightly staggered line across the frame.

**INTRODUCING UNPRECEDENTED
MASTERPIECE SETTING A NEW
INTERPRETATION OF WATERFRONT
LIVING.**



Indoor Children Play Area



Parking Area



The Rise
R e s i d e n c e

T H E L I V I N G F O R T H E P A S S I O N A T E