



# *The* Rise

THE LIVING FOR THE PASSIONATE

APARTMENT - TYPE EIGHT

3 + 1 ROOM - OCEAN VIEW

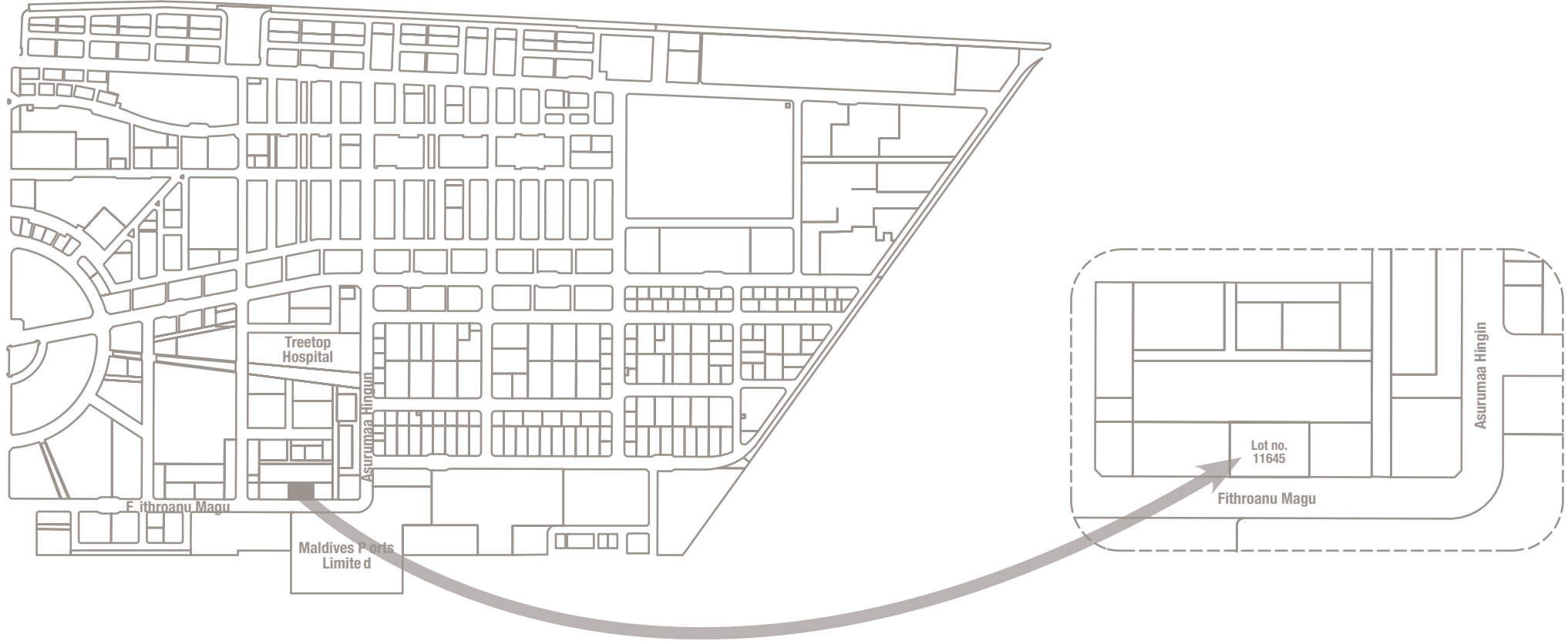
**WELCOME TO *The* RISE**

THE LIVING FOR THE PASSIONATE



**INDULGE  
THE THRILL  
OF LIVING IN  
PERFECTION  
AND SERENITY.**

# LOCATION



# THE DEVELOPER

The Rise is an initiative by Fedo Pvt Ltd, a leading company with over a decade of experience in premium construction. Over the years Fedo Pvt Ltd has delivered high quality real estate projects which has received many positive testimonials from its clients. Fedo aims to offer a unique living experience at “The Rise” by combining innovative design, conveniences and quality services and facilities that delivers passionate living spaces..

# THE CONCEPT

The Rise is a contemporary living space introduced by Fedo Private Limited. Designed with ultimate sophistication and elegance in mind, The Rise offers Breathtaking views of the vast turquoise lagoon stretched towards the Velana International Airport and the magnificent take-off and landing view of planes touching down the Maldives along with the glaring sun setting down the water ridge. The Rise has over 53 ultramodern and spacious apartments.



Living Room - Apartment - Type Eight

**TEKTÖN**  
DESIGN

# FLOOR PLAN

## TYPE EIGHT

### Residence Description

03 Bedrooms

03 Attached Toilets

01 Maid Room

01 Laundry Room

02 Balcony

View: Ocean Front

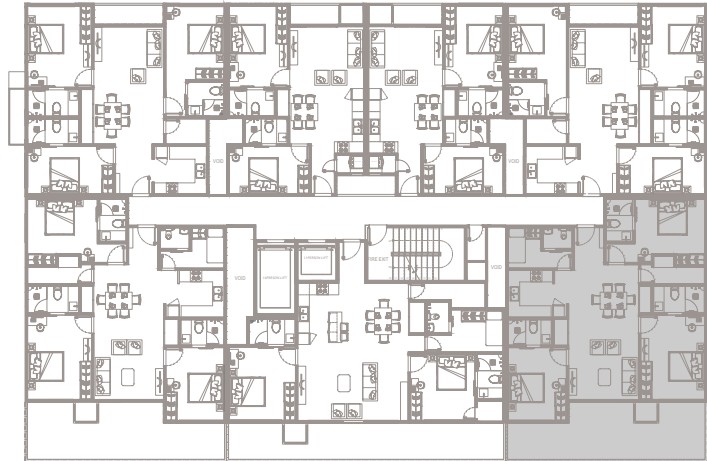
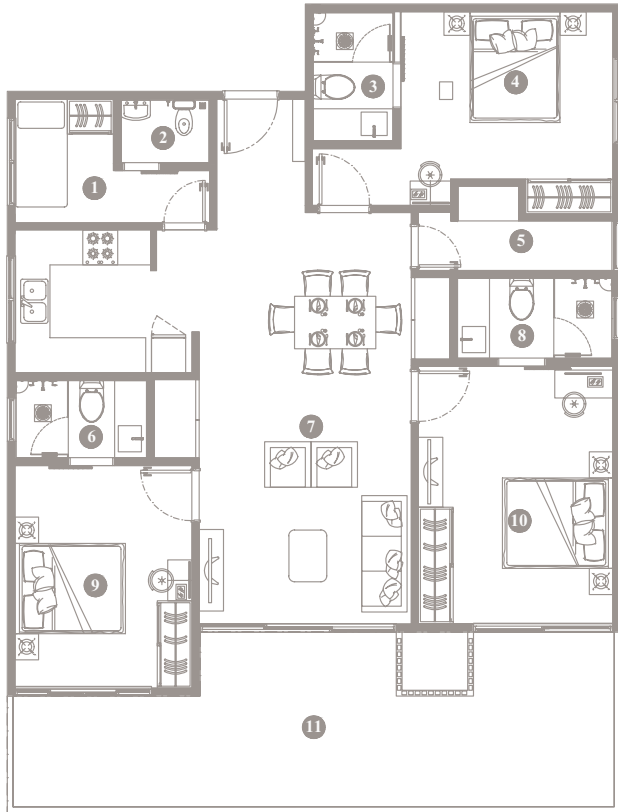
Floor Area: 1496 Square Feet

STATED DIMENSIONS ARE BASED ON THE STANDARD ARCHITECTURAL DRAWINGS APPROVED BY HOUSING DEVELOPMENT CORPORATION. A CHANGE TO THE INTERIOR FINISHING CAN BE ACCOMMODATED ON A REQUEST BASIS AND IN COMPLIANCE WITH THE CODES SET BY THE HOUSING DEVELOPMENT CORPORATION.





## TYPE EIGHT (Measurements)



No	Component	Area (SQFT)
01	Maid Room	50.48
02	Toilet	32.51
03	Toilet	32.51
04	Bedroom - Two	142.73
05	Laundry	38.43
06	Toilet	31.86
07	Living/Dining/Kitchen	412.15
08	Master Toilet	37.89
09	Bedroom - Three	125.94
10	Master Bedroom	161.14
11	Balcony	296.33

THE LIVING FOR THE PASSIONATE



Dining Area - Apartment - Type Eight

**DESIGNED FOR DISCERNING  
CLIENTS SEEKING EXCLUSIVE  
LIVING.**

THE LIVING FOR THE PASSIONATE



**SPACIOUS.  
ELEGANT.  
BUILT TO  
PERFECTION.**

Main Toilet - Apartment - Type Eight

**TEKTÓN**  
**DESIGN**  
ARCHITECTS  
& ENGINEERS

# FEATURES AND SERVICES

---

Car parking slot available for purchase for selected apartments

---

A spacious indoor swimming pool

---

24 hour security and CCTV surveillance throughout the property's public areas.

---

Well equipped and managed children playroom in the common area

---

Maintenance and waster management services

---

A private lobby area for tenants

---

Two Spacious Elevators with access control for apartments

---

An equipped indoor gym facility

---

Smoke detectors and fire hydrant system throughout the whole building

**A SPACIOUS ABODE FOR A  
HAPPIER LIVING.**

THE LIVING FOR THE PASSIONATE



Master Bedroom - Apartment - Type Eight

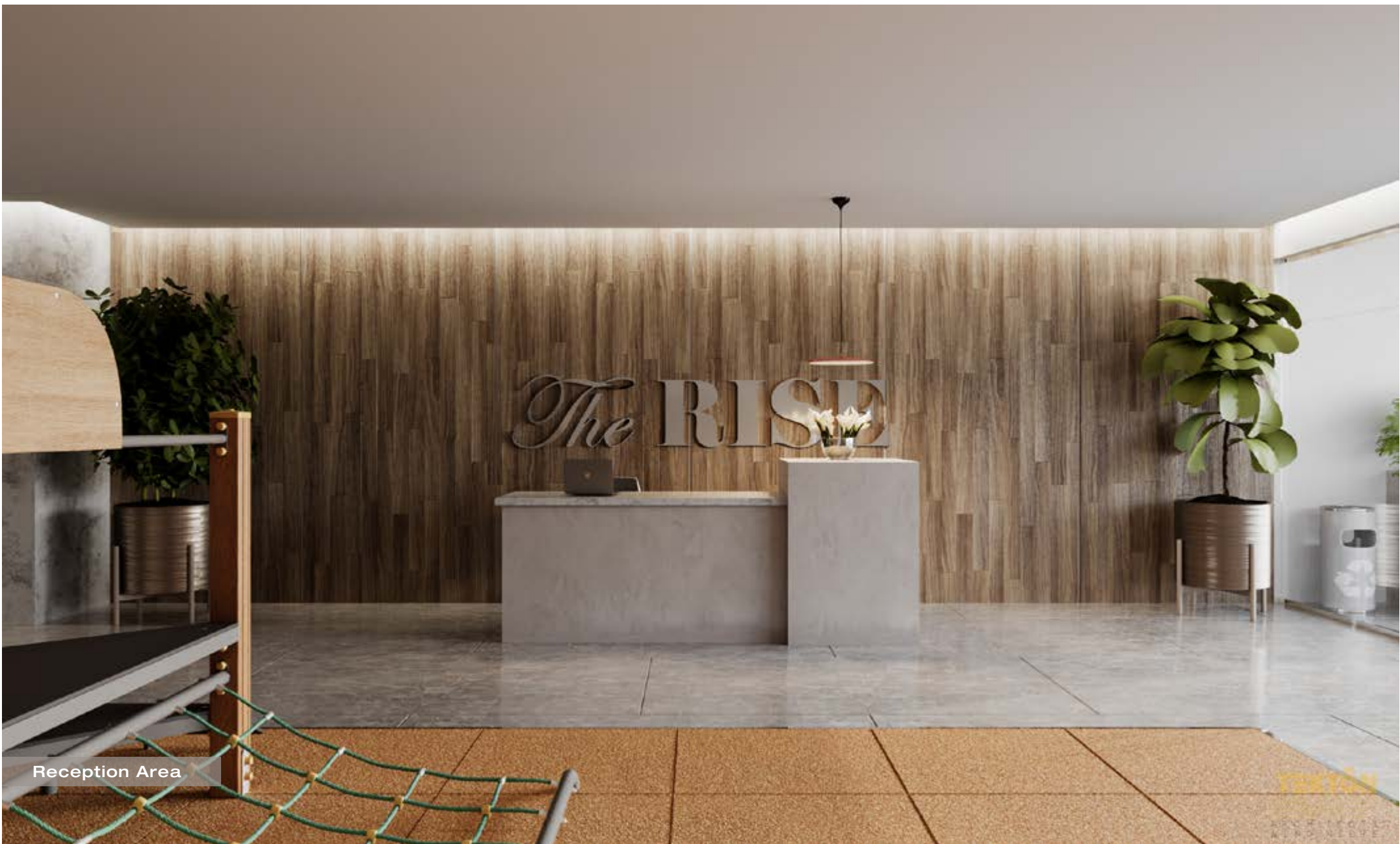
**TEKTÖN**  
**DESIGN**  
ARCHITECTS  
& ENGINEERS



Main Pool Area

STANTON





Reception Area

**AN ADDRESS OF DISTINCTION  
AND STYLE.**

THE LIVING FOR THE PASSIONATE




**DESIGN WITH  
PRIVACY AND  
AESTHETICS  
IN MIND.**

Access to Apartments



Gym and Common Area

A row of palm trees against a light sky background. The trees are tall and slender, with their fronds visible at the top. The background is a pale, hazy blue, suggesting a bright, overcast day.

**INTRODUCING UNPRECEDENTED  
MASTERPIECE SETTING A NEW  
INTERPRETATION OF WATERFRONT  
LIVING.**



Indoor Children Play Area



Parking Area



*The Rise*  
R e s i d e n c e

T H E L I V I N G F O R T H E P A S S I O N A T E